

3M Science.
Applied to Life.™



Superior slip protection, every step of the way



3M™ Safety-Walk™ Anti-Slip Tapes
Application guide

Tapes have been developed by 3M scientists to provide traction on slippery surfaces where potential slips and falls can occur.

The simple step to a safer workplace.

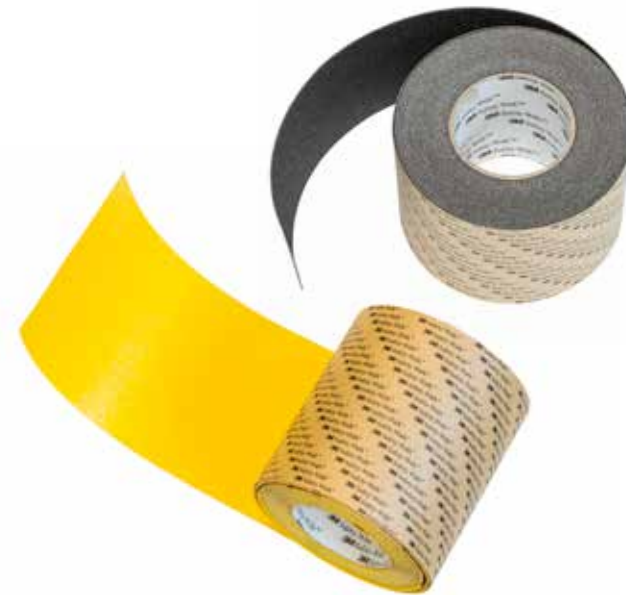
3M™ Safety-Walk™ Anti-Slip Tapes

Every year, thousands of people are injured by slips and trips in the workplace, at great cost to their personal health, and to their employer's reputation and bottom line.

Many of these risks are entirely preventable with 3M Safety-Walk Anti-Slip Tape – a high performance anti-slip flooring tape that is designed to keep your workers safe and productive, whilst lowering your compensation and insurance costs.

What makes 3M Safety-Walk Anti-Slip Tape right for you?

- Outstanding slip resistance in dry, wet and oily conditions
- Self adhesive backing for quick and easy application
- Adheres to clean, dry surfaces without wrinkling, curling, tearing, shrinking or lifting
- Proven performance over an extended lifetime
- Low profile prevents trip hazard and allows easy wheel crossing
- Available in a variety of sizes, colours and textures
- Custom shapes and sizes on request
- Fully compliant with EC Directive 89/654



Are your floors up to standard?

According to the European Agency for Safety and Health at Work, slips, trips and falls are the most common cause of over 3 day accidents in the workplace.

Stairways, ladders, ramps, walkways, machinery, kitchens, showers and changing rooms are all potential areas of risk. In particular, slippery surfaces caused by wet, greasy or oily floors are a major contributor to accident statistics.

Compliance with EC Directive 89/654 on floor safety (see below) helps you to minimise risk, limit costly down-time, and reduce your financial liability. It can also save lives.



EC Directive 89/654 (Health & Safety at the workplace)

Annex 1:

9.1 The floors of workplaces must have no dangerous bumps, holes or slopes and must be fixed, stable and not slippery.

21.3 When workers are employed at workstations outdoors, such work stations must as far as possible be arranged so that the workforce....cannot slip or fall.



3M™ Safety Walk™ Anti-Slip Tapes – for every floor surface

3M Safety Walk Anti-Slip Tapes provide vital traction on slippery surfaces where potential slips and trips can occur, or where safety may be a concern. It is available in a choice of specifications to reduce the risks associated with different workplace environments - from manufacturing, healthcare and food service facilities, to commercial, transport and leisure applications.

Engineered for long-lasting slip protection

3M Safety Walk Anti-Slip Tapes have been developed by 3M scientists to provide effective, consistent and repeatable high performance levels over a long service life.

Why choose 3M Safety Walk Anti-Slip Tapes?

- High quality abrasive particles ensure outstanding slip resistance
- Tough, durable resin delivers long-lasting performance
- Plastic film and aluminium foil backing provide dimensional stability and conformability
- High performance pressure-sensitive adhesive ensures easy application and exceptional bonding to most surfaces

Environmental benefits of IMPROVED 3M Safety-Walk Anti-Slip Tapes:

- Nearly eliminated solvent used in Safety-Walk™ 610, 710, 770 formulations - eliminating the use of more than 27 tons of solvent (Based on 2014)
- Safety-Walk™ 610, 710, 770 certified phthalate free
- Reduced supply chain transportation of Safety-Walk™ 610, 710, 770 by greater than 11,000 miles (18,000 km) - eliminating 24 metric tons of CO₂ equivalents (based on 2014)



3M™ Safety-Walk™ General Purpose - 600 Series

For light to heavy shoe-traffic areas

Description

Safety-Walk General Purpose is a mineral-coated, abrasive material adhered by a durable resin to a pressure-sensitive adhesive backed plastic film. It provides an effective slip-resistant surface in most shoe traffic applications.

Application

It is used for all slippery surfaces with intensive pedestrian and light vehicle traffic; for example, stairways, production and storage rooms, ramps, ladders and machine footplates.

Surfaces

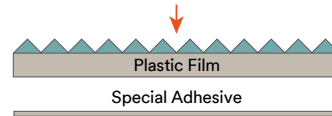
It is particularly effective on concrete (painted or primed), resilient tile, metal and porous surfaces if primed.

Colours

Black (610)
Green (640)
Clear (620)
Brown (660)
Yellow (630)

Product construction

Mineral Particles for permanent slip resistance in all applications



3M™ Safety-Walk™ Coarse – 700 Series

In extreme conditions

Description

Safety-Walk Coarse contains extra large mineral particles bonded by a tough durable polymer to a dimensionally stable plastic film. This durable construction provides additional slip resistance in extreme conditions and its open abrasive pattern resists clogging when oil and mud are present.

Application

It is used on agricultural and forestry equipment, ship and plane decks, trains, oily wet areas, machine shops, construction vehicles, platforms and ramps.

Surfaces

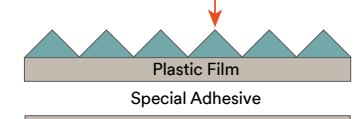
It is particularly effective on concrete (painted or primed), resilient tile, metal and porous surfaces if primed.

Colours

Black (710)

Product construction

Extra strong mineral particles to prevent clogging in dirty and oily applications



General Purpose 600 Series at a glance:

- **Mineral-coated**, high friction slip-resistant surface
- **High performance** press-sensitive adhesive for easy application
- **For light to heavy shoe-traffic** areas
- **Low-profile design** helps reduce trip hazard
- **Highly durable surface** which withstands the rigours of equipment traffic



Coarse 700 Series at a glance:

- **Extra large abrasive** mineral particles provide a stable slip-resistant surface even in the presence of water or oil
- **Open abrasive** pattern resists clogging and reduces clean up time
- **For extreme, heavy traffic** areas
- **High performance adhesive** creates excellent bond to most surfaces

3M™ Safety-Walk™ Conformable – 500 Series

On irregular or contoured surfaces

Description

Safety-Walk Conformable is a high-friction, slip-resistant material that has a special pressure-sensitive adhesive backed aluminium film that conforms and adheres to irregular surfaces.

Application

It is especially suited to uneven and contoured surfaces (e.g. diamond plate). It is used on steps and stairwells, ladder rungs and fire escapes.

Surfaces

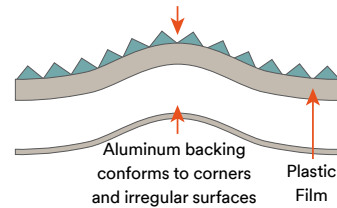
It is specially designed for textured surfaces and textured porous surfaces (if primed).

Colours

Black (510)
Yellow (530)

Product construction

Mineral Particles for permanent slip resistance in all applications



3M™ Safety-Walk™ Medium Resilient – 300 Series

In barefoot or shoe-traffic areas

Description

Safety-Walk Medium Resilient is a soft textured, non-mineral, medium resilient surface bonded to a pressure-sensitive adhesive backed plastic film. It provides a comfortable, hygienic, slip-resistant covering.

Application

It is ideal of barefoot or light shoe traffic areas and wet areas such as boats and watersports equipment, locker rooms, around tubs and pools.

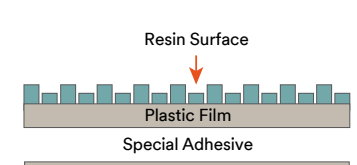
Surfaces

It is particularly effective on concrete (painted or primed), resilient tile, smooth metal, fibreglass and porous surfaces if primed.

Colours

Black (310)
Grey (370)

Product construction



Conformable 500 Series at a glance:

- **Mineral-coated**, high friction slip-resistant surface
- **Aluminium backing** conforms to corners, curves and irregular surfaces
- **Aggressive, high performance** adhesive forms an excellent bond for a secure hold
- **For irregular or contoured surfaces** in light to heavy shoe-traffic areas
- **Safety yellow colour** for high visibility and easy identification of hazard areas



Medium Resilient 300 Series at a glance:

- **Non-mineral**, medium textured, slip-resistant vinyl surface
- **Textured resilient high friction** surface and durable adhesive provide long-lasting performance
- **For barefoot or shoe-traffic** areas

3M™ Safety-Walk™ Fine Resilient – 200 Series

In wet, barefoot-traffic areas

Description

A fine textured, slip-resistant vinyl surface with a pressure-sensitive adhesive backing. It provides enhanced safety and comfort in light and barefoot traffic areas.

Application

It is ideal for barefoot and wet areas, shower rooms, baths, changing rooms and around saunas.

Surfaces

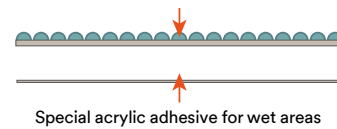
It is particularly effective on concrete or other porous surfaces (if primed, painted or sealed), ceramic tile, fibreglass and smooth metal.

Colours

White (280)
Clear (220)

Product construction

Finely textured surface for barefoot movement



General Purpose 600 Series

For light to heavy shoe-traffic areas

610 General Purpose Black
620 General Purpose Clear
630 General Purpose Yellow
640 General Purpose Green
660 General Purpose Brown



Coarse 700 Series

In extreme conditions

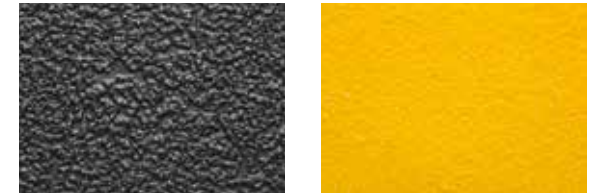
710 Coarse Black



Conformable 500 Series

On irregular or contoured surfaces

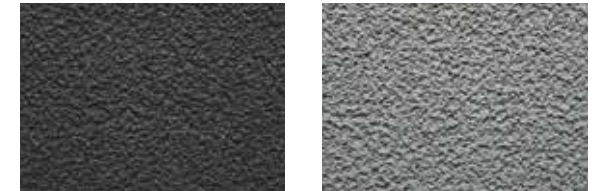
510 Conformable Black
530 Conformable Yellow



Medium Resilient 300 Series

In barefoot or shoe-traffic areas

310 Resilient Medium Black
370 Resilient Medium Grey



Fine Resilient 200 Series

In wet, barefoot-traffic areas

220 Resilient Fine Clear
280 Resilient Fine White



Fine Resilient 200 Series at a glance:

- **Non-mineral**, fine textured, slip-resistant vinyl surface
- **Its high performance**, water resistant, acrylate adhesive is ideal for wet conditions
- **For wet, barefoot traffic** areas



Commercial Solutions
3M United Kingdom PLC
3M House
28 Great Jackson Street
Manchester M15 4PA
Extranet: www.3M.co.uk/MyFacilities
commcareuk@mmm.com
www.3M.eu/Facilities

3M Ireland Limited
The Iveagh Building
The Park
Carrickmines
Dublin 18
Phone: 01 280 3555
Fax: 01 280 3849

Please recycle. Printed in UK.
3M and Safety-Walk are
trademarks of 3M.
© 3M 2015. All rights reserved.